



YORKSHIRE VERNACULAR BUILDINGS STUDY GROUP

www.yvbsg.org.uk
www.facebook.com/yvbsg
twitter.com/YorksVernacular

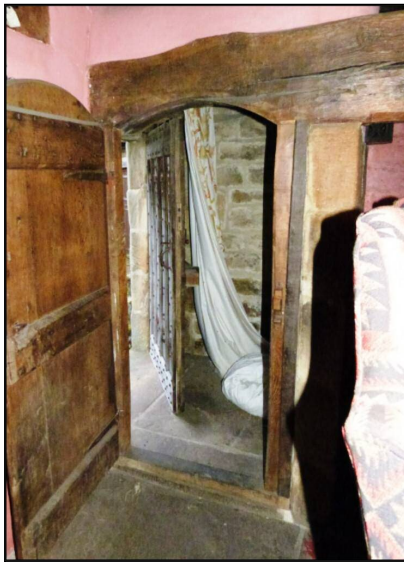
Newsheet No 97

August 2019

YVBSG Events For Your Diary

South Yorkshire Vernacular: review day of Buildings of Hallamshire and the Dark Peak

Saturday 14 September 2019



Fairhouse, Lower Bradfield

As we explore our project area, and record and visit more buildings, interesting patterns are beginning to emerge where we can relate similar buildings through their plans and details. Having lived in the Upper Calder Valley for over thirty years I am used to the norm being a three-room plan farmhouse with a cross-passage, with only a handful of houses with two-cell plans, some with gable entries. In South Yorkshire the situation is reversed with outstanding examples of two-cell houses often featuring a continuous rear outshut.

Many houses have surviving bressumers (and firehoods) that are cut with an arched doorway making a distinctive feature that I never saw in West Yorkshire! We will consider this in more detail at our

forthcoming event in Sheffield, as detailed in the flyer accompanying this newsletter. Fairhouse at Lower Bradfield has such an inglenook fireplace that is very similar to one at Wellbank Farm Cottage at Upper Midhope which we visited on my Taster Visit, where a carved bressumer is set between a pair of huge crucks. This is cut with an integral arched head for the lobby entry doorway. At the end of our Sheffield recording conference we visited Bishop's House Museum at Norton which is a superb timber-framed hall-and cross-wings house. While inspecting it I noticed the wallplate in the hall chamber was cut with a similar arched head that may also have originated as a bressumer beam, something that the local experts had not previously considered until we drew it to the attention of our guide Ken Dash.



Bishop's House, Norton

Come and learn more about these fascinating buildings that your fellow members took great pains to faithfully record, and have an enjoyable day in Sheffield with talks in the morning sitting in really comfortable seats seeing the buildings recorded, followed by a buffet lunch in the Showroom Cinema before we are taken in the afternoon on a walk around the Sheffield centre led by an architectural expert. Hope to see you there? We need your support!

Peter Thornborrow

A walk around Bedale

Saturday 28 September 2019

A walk around Bedale led by Tony Robinson, loosely in the footsteps of Robert Hird (1768-1841), local diarist, 'poet' and shoemaker. Meet at 2pm at the car park at the rear of Bedale Hall. We hope to finish around 4pm at Panetti's where hopefully we will be able to view the roof structure (recorded by the Group in 1974, Report 101).

Bedale Hall (which houses the library and museum) is at the north end of the main street next to the golf club and opposite the parish church. On-street parking is available, or off-street parking behind the main street. Bedale Hall car park is 'for patrons only'.

No need to book, but contact Tony on bridgetandtony@hotmail.com if you have any queries.



The Old Grammar School of 1674, located within Bedale churchyard.

Annual Day School and AGM

Saturday 14 March 2020

We plan to hold the annual day school in York again next year, looking at some of Yorkshire's 'extraordinary buildings'. Full details to follow in the November Newsheet.

Reports on recent events

A visit to Horton-in-Ribblesdale

This picturesque village in the Yorkshire Dales National Park is the starting point for the Three Peaks Challenge Walk. Saturdays are popular for making the twenty-four mile circuit especially today, 22 June, being the longest day of the year. Fortunately for the fifteen YVBSG members assembling to study its vernacular architecture, Horton has several enterprising farmers willing to open their fields for parking so we were able to set off promptly at 10am to explore the village.



Weather wall at North Cote Farm. A gap of several inches has been left open between the weather wall and the gable wall of the house.

We made our way firstly to Holme Farmhouse which is a good representative example of the local building style. Dating to the mid eighteenth century, possibly even earlier, it is made from local limestone rubble with gritstone quoins and detailing. The front elevation has flat-faced mullion windows to ground and first floor of nineteenth century type but the rear elevation retains original chamfered mullion windows of the eighteenth century. A feature of this house and many others we viewed in the area is the decorative courses of protruding stone in thin bands, often in the gable ends of houses and in field barns, making a distinctive appearance.

The Golden Lion Inn, opposite St Oswald's Church, has a weather wall to its rear gable. Weather walls, as their name suggests, are added to form a water resistant barrier slightly in front of the house gable facing the prevailing weather. This one is 5' 6" thick (Kevin has measured it) and is one of only two remaining in the parish. We were to visit the other one at North Cote Farm later in the day. A gable chimney stack, when present, stepped back from the face of the weather wall gives its presence away.

After visiting several other interesting buildings in the village we car-shared on a tour of sites close by. Rowe Farm, on the road to Selside, has a carved embattled lintel over the central doorway with a central panel inscribed 'IL 1723' and dating the building. Chamfered surrounds with ovolo mullion windows completed the attractive double-fronted main elevation. Two lateral ranges to

the rear had similar openings but with flat-faced mullions and a central stair between. The group discussed the presence of a central chimney stack, slightly offset to one side of the doorway, and further stacks on both gables and how these fireplaces might work internally. The owner explained that the central stack served the upstairs bedroom only with the gable stacks serving the two lower chambers. Having a separate stack for each fireplace was encountered at several other houses in the area and this seems to be another distinctive local feature.



Doorhead at Rowe Farm

The most interesting building for many was Lodge Hall between Selside and Ribbleshead. The magnificent moulded doorway (pictured on the front of the last Newsheet), complete with carved halberds to either side, dated the house to 1637 although

possibly on an earlier site. The main façade is stepped, caused by an offset parlour, with a corner window facing two directions and a corner mullion. Other windows have ovolo mouldings and unusual vesica (almond shaped) fire-windows on the first and second floors. The ground floor hall is entered directly from the central doorway with a small internal porch to reduce draughts, a feature unique to the Settle area.



Lodge Hall

A highlight of the day was undoubtedly the visit to Shaws Farmhouse where the owners kindly gave the group a tour of the house, including the attic. Dating to the late seventeenth century, Shaws has a curious restored porch carved with a 1738 date and Ionic columns and a triangular pediment. The original seventeenth century plank door with decorative applied detail is still in use. Inside were many exposed beams, some showing mortises and other carpentry from a previous use. A recent dendro-dating programme of the roof timbers has revealed that some were felled in the late 1400s.

The huge quarries where the local Horton Flag was extracted are impossible to ignore on the western hillsides above the

village. This remarkable slate, a type of mudstone, is used in many of the vernacular buildings in the district. The walls of a few, probably nineteenth century, buildings are made from this flagstone in their entirety making for a distinctive pattern. Horton Flag is more usually encountered in the enormous flagstones, some measuring over nine feet long, used as flooring or roof coverings and in gate posts, stiles and field walls.

The group stopped to examine a number of barns all with interesting local vernacular features. Special attention was given to Hewbell Barn alongside the road near Selside. This field-barn had a roof with a 'wrestler ridge'; a rare northern construction technique used when normal carved stone ridge tiles were unavailable. The majority are found further north and this example is the most southerly in England. The slates of the roof are overlapped forming a distinctive crossed ridge such as when interlocking fingers to form an 'A' shape with your hands.



Hewbell Barn (above) with closer view of wrestler slate ridge (below left)

After the afternoon tour the group returned to Horton village at the end of the day to see three more vernacular buildings located just beyond the church. The whole day was full of delights whether from the wide range of buildings we examined, the warm sunny weather or the home cooked food at Helwith Bridge Inn at lunchtime. We all thanked Kevin Illingworth for arranging and leading such an enjoyable day.

Peter Burton

Mailing lists

Email list. The enclosed day school flyer has already been sent by email to those members who have indicated that they are happy to accept email messages from the Group. If you didn't receive the message and would like to sign up for future email messages, please contact Pat Leggett on membership-secretary@yvbsg.org.uk.

Recording list. If you'd like to join the list of members who are interested in hearing about recording opportunities as they arise, please drop an email message to Mary Cook on secretary@yvbsg.org.uk.

Tree ring dated buildings

For a useful printable list of all buildings in Yorkshire which have been dendro-dated, head to the Vernacular Architecture Group website at www.vag.org.uk/dendro-tables. The list has recently been updated; lists for other counties are also available here, as well as lists arranged by date.

Vernacular Architecture Group

Are you interested in taking a wider look at vernacular buildings? Membership of the national Vernacular Architecture Group (VAG) entitles you to attend a spring conference which is held in a different part of the country each year and which involves three full days of visiting some remarkable buildings (many of which are private houses), usually travelling by coach or minibus, with accommodation in educational institutions or hotels. The next spring conference, on 21 to 25 April 2020, will be held in the Greater Manchester area.

In addition, members can also attend the annual winter conference which normally takes place each January in Leicester. The next winter conference on 4 and 5 January 2020 will consider the wide range of marks to be found on vernacular buildings, and the vernacular practices and beliefs from which they spring.

Membership costs £20 a year and details about the group and its activities can be found at www.vag.org.uk.

Historic maps online

If you haven't already discovered them, you might like to explore the growing collection of historic maps available on the National Library of Scotland's website at maps.nls.uk. These include a 'spyglass' facility which allows you to peek through a modern day satellite image to a historic map below (maps.nls.uk/projects/layer-spy) – great fun!

Heritage Open Days

This annual event takes place this year between Friday 13 and Sunday 22 September 2019, with over seven hundred events and open buildings in the Yorkshire and Humber region. Buildings of interest include properties in Beverley's Highgate, Adlingfleet Medieval Rectory, medieval Calverley Hall near Leeds, and much much more. Or venture out of the county and try Merchants Taylors' Girls School (c.1622) at Great Crosby, Sefton (seven miles north of Liverpool). For a full list, see www.heritageopendays.org.uk.

Committee meeting

The next meeting of the committee will be held on Saturday 12 October 2019. If you'd like to raise any matters, or have ideas for future events please contact the Secretary, Mary Cook.

Next Newsheet

The next Newsheet will be in November 2019 – please send any contributions to the editor by 31 October 2019. Short articles on buildings or features would be welcome, as well as details of publications or events that might be of interest to other members.

Other events of possible interest ...

Some of these events are publicised a long time in advance, so you may wish to check details before you go!

Markenfield Hall Tours

September to November 2019

Some guided tours of this moated fourteenth century house are still on offer for this year – further details are available at markenfieldhall.com.

Historic Graffiti and Superstitious Beliefs

Tuesday 3 September 2019

Special tour looking at symbols, marks and taper burns at Hoghton Tower, just over the border in Lancashire. £9. Hoghtontower.co.uk.

Vernacular to Edwardian: Historic Buildings of Skipton

Thursday 5 September 2019

A walk led by Sue Wrathmell for Upper Wharfedale Heritage Group. 6pm to 8pm, guests £2. To book, email hmsteele8@gmail.com. Details at www.uwhg.org.uk.

Vernacular Buildings Walk: Thorns

Thursday 12 September 2019

A guided walk with Alison Armstrong for *Stories in Stone*. 2pm to 4pm, £10. Also on the same day (and repeated on 1 October 2019) a guided walk with David Johnson around 'Thorns: an abandoned settlement' from 10am to 12 noon, £15. For information on how to book, see www.ydmt.org.

The Medieval Carvings of St Mary's, Beverley

Thursday 12 September 2019

A talk to Beverley Civic Society by Dr David Boswick on medieval and tudor bosses and misericords. 7.30pm in St Mary's Church Hall, Beverley.

Tour of Medieval Malton

Saturday 14 September 2019

Walking tour organised by Friends of Malton Museum, 11am to 12.30pm, £5. See www.maltonmuseum.co.uk for details of how to book.

The Folly – a House Through Time

Tuesday 17 September 2019

A talk by Sarah Lister to North Craven Heritage Trust, 7.30pm at Long Preston Village Hall. Further details at www.northcravenheritage.org.uk.

The History of Wentworth Castle

Friday 20 September 2019

A talk by Trevor Moody, a National Trust speaker, to Pontefract & District Archaeological Society. 7.15pm at Central Methodist Church, Pontefract, £3. www.pontarc.org.uk.

Local History Book Fair

Saturday 21 September 2019

Annual fair organised by East Yorkshire Local History Society, in Hull Minster from 10am. See www.eylhs.org.uk.

The Lost Village of Lodge

Friday 27 September 2019

Lunchtime lecture by Jim Brightman at North Yorkshire Record Office, Northallerton, 12.30pm, £2 including light refreshments. Further details at www.northyorks.gov.uk/record-office-projects-and-events.

Discovering Lakeland Villages

Wednesday 2 October 2019

A talk by Andrew Lowe to Sedbergh & District History Society. 7.30pm at St Andrew's Church, Sedbergh, £2. www.sedberghhistory.org.

Burton Agnes Hall Behind the Scenes Tour

Thursday 3 October 2019

See parts of the Elizabethan house not usually open to the public. The last tours for this year are at 11am or 2pm, £15. Must be booked in advance – telephone 01262 490324 or see www.burtonagnes.com.

Scribbles, Scorch Marks, and Inscribed Symbols

Friday 11 October 2019

A talk by Andy Bentham to New Mills Local History Society. 7.45pm at New Mills Town Hall, High Peak, Derbyshire. £1.50. www.newmillshistory.org.uk.



Traditional Buildings of North-East Lancashire and Adjacent Areas

Wednesday 16 October 2019

A talk by Kevin Illingworth to Pendle and Burnley Branch of Lancashire Family History & Heraldry Society. 7.30pm at Colne Library. www.lfhhs-pendleandburnley.org.uk.

Preserving Settle's Historic Buildings

Thursday 17 October 2019

A talk by James Innerdale to North Craven Heritage Trust. 7pm at Victoria Hall, Settle (the Trust's AGM takes place this evening and is for members only – www.northcravenheritage.org.uk).

17th Century Yeoman and Gentry Houses and Furniture of the Upper Calder Valley

Thursday 14 November 2019

Talk by Peter Thornborrow to Linton Antiques Society, 8pm at the Memorial Hall, Linton, near Wetherby. See www.lintonantiquesociety.org.uk.

History of Swinithwaite Hall

Friday 15 November 2019

A talk by Bridget Thorntonberry about this eighteenth century house at West Witton. 7.30pm at the Dales Countryside Museum, Hawes. Free, part of the Friends of the Museum annual lecture programme. See www.dalescountrysidemuseum.org.uk.

Local House Histories

Monday 18 November 2019

A talk by Arline Ashton to the Kirby, Great Broughton and Ingleby Greenhow Local History Group, 7.30pm at Great Broughton Village Hall. www.kgbighistory.org.uk.

South Yorkshire Archaeology Day

Saturday 30 November 2019

Annual event at the Showroom Cinema, Sheffield, presenting the results of fieldwork and research in the area. 10am to 4.30pm. Price: £18 waged, or £10 concessions. Sandwich lunch £10. To book, go to www.sheffield.gov.uk/archaeologyday. Our chairman Peter Thornborrow has been invited to speak about YVBSG's South Yorkshire Vernacular Buildings Project.

Chair: Peter Thornborrow, The West Wing, Birthwaite Hall, Huddersfield Road, Darton, Barnsley S75 5JS, chairman@yvbsg.org.uk
Secretary: Mary Cook, 12 Annand Way, Newton Aycliffe DL5 4ZD, 01325 310114, secretary@yvbsg.org.uk or enquiries@yvbsg.org.uk
Membership Secretary: Pat Leggett, 11 Lonsdale Meadows, Boston Spa, W Yorks, LS23 6DQ, membership-secretary@yvbsg.org.uk
Treasurer: Sue Southwell, 2 Water End, Brompton, Northallerton DL6 2RL, 01609 776863, treasurer@yvbsg.org.uk
Archivist: David Cook, 12 Annand Way, Newton Aycliffe DL5 4ZD, 01325 310114, archivist@yvbsg.org.uk
Yorkshire Buildings Editorial Team: Tony Berry, Tony Robinson, Beth Shurter, editor@yvbsg.org.uk
Newsheet and Web: Lorraine Moor, 102 Queen Victoria Street, South Bank, York YO23 1HN, newsheet@yvbsg.org.uk