



YORKSHIRE VERNACULAR BUILDINGS STUDY GROUP

Website: <http://www.yvbsg.org.uk/>

Newsheet No 30

September 2002

YVBSG Events For Your Diary

Ripon Conference Review Day

Sunday 29 September 2002

Meet at 1.45pm for 2pm start at the Unicorn Hotel, Ripon. Finish approx 5pm. Presentations will be given on the buildings recorded in Ripon and Copt Hewick in May. Do come along, even if you didn't attend the conference. There will be a small charge of £2 on the day to cover room and equipment hire.

Skidby Windmill & Walk around Beverley

Saturday 19 October 2002

There are two parts to this day – come to one or both. Full details were published in the last newsheet.

In the morning is a visit to Skidby Windmill, located off the A164 between the Humber Bridge and Beverley; meet at 10.30am at the mill. Charge of £1.50 adults, 50p children, 80p concessions. Food available at cafe. If you'd like to attend, please contact Malcolm Birdsall (tel 01943 830460, email malcolm@brhc.co.uk).

In the afternoon, Dr David Neave will lead a walk around the historic market town of Beverley. Meet at the north porch of Beverley Minster at 2pm; there are two timber-framed buildings nearby as well as the friary before heading into town. Finish at around 4.30pm. No need to book for the afternoon walk.

Recording Day near Scarborough

As a contribution to the preparations for the Vernacular Architecture Group spring conference to be held in Yorkshire in 2004, we are planning to organise a recording day in the Scarborough area in late October or early November. The date for this recording day has not been set at the time of publication, but as it will have passed by the time the December newsheet is issued, please contact Malcolm Birdsall on 01943 830460 if you are interested.

Committee Meeting

Sunday 10 November 2002

If you'd like to bring any matter to the attention of the Committee, or if you have any suggestions for future activities, please contact David Crook.

Facts and Figures

Current number of members: 180
Number of website visitors to date: 4055

30th Anniversary Evening Celebration

We are hoping to organise an evening celebration to mark the group's 30th anniversary. Details to follow in the December newsheet.

The House and Family History

Saturday 15 March 2003

The theme for next year's Day School will be *The House and Family History*. It will be held in York and booking forms will be sent out with the December newsheet. Thank you to those people who responded to the call for speakers. If anyone has any other suggestions or ideas please contact David Cook before 31 October.

Thanks are due to ...

- Arnold Pacey for organising an excellent study day in Starborton and Kettlewell in June.
- David Cook for arranging a most enjoyable visit to Markenfield Hall (and, with Gunhild Wilcock, for providing the musical recital!) in July.
- David Crook and Malcolm Birdsall for organising a very interesting morning at Farnley Hall in August.

Yorkshire Buildings

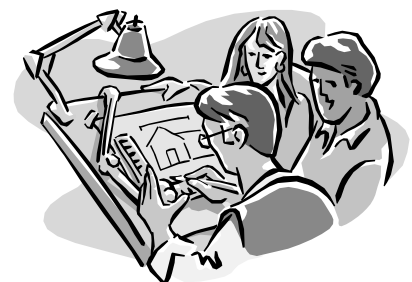
As always, I'd like to encourage members to contribute to the next edition of the annual journal, *Yorkshire Buildings*. All articles, long or small, gratefully received. The deadline is the end of December 2002.

Next newsheet

Thank you to everyone who contributed to this newsheet. Please send any items for the next newsheet to the editor by the end of November 2002.

Recorders needed!

Is anyone interested in recording a farm and barns at Crag in the Bramhope/Horsforth area, or another one at Stanbury near Haworth in the near future? If you'd like to be involved, please contact Alison Armstrong on 01535 633592 as soon as possible.



Courses and classes

It's the start of a new academic year, and here are just a few of the daytime and evening classes on offer in the region during the autumn term. Apologies for publicising some of these when the first class has already taken place.

Rural Houses of West Yorkshire, 1600-1700

Tutor: Peter Thornborrow. A wide range of West Yorkshire's fine 17th century houses and barns will be examined, looking at the different building materials and construction methods, and the plans and uses of the buildings.

WEA course, to be held in Sowerby Bridge, Mondays, 7pm-9pm from 16 September 2002 (enquiries: Jo Higgins, tel 01422 845347), or in Dewsbury, Wednesdays, 7pm-9pm from 18 September (enquiries: Linda Croft, tel 01422 253020).

Architecture of the West Riding

Tutor: Alan Petford. This course introduces the diversity of architecture present in the West Riding, from medieval churches to non-conformist chapels and from textile mills to workers' housing.

WEA/University of Leeds course, to be held at Brighouse Adult Education Centre, Tuesdays, 7pm-9pm from 17 September 2002 (enquiries: Linda Croft, tel 01422 253020, email lcroft@wea.org.uk). Also at Swarthmore Educational Centre, Leeds, Thursdays 10.30-12.45 from 3 October 2002 (enquiries: Mavis Tee, tel 0113 257 7009, email mtee@wea.org.uk).

The Industrial Archaeology of Calderdale

Tutor: Martin Roe. Calderdale's rich industrial heritage will be brought to life through slides, field trips and historical documents. Themes will include mills and textiles, transport, mining and quarrying and brick and pipe making. See the tutor's web pages at <http://www.halifaxcouriertoday.co.uk/ftpinc/calderheritage/calderhome.htm>.

WEA course, to be held in Hebden Bridge, Thursdays 1.30pm-3.30pm from 19 September 2002 (enquiries: Jo Higgins, tel 01422 845347).

Armchair Walks Round Pudsey

Tutor: Jacqueline Depelle. Ever looked at buildings on the way to the shop or when out walking and wanted to know more about them? This course will take you round Calverley, Farsley, Fulneck, Pudsey – without moving a muscle!

WEA course, to be held in Pudsey, Tuesdays 1pm-3pm from 24 September 2002 (enquiries: Mavis Tee, tel 0113 257 7009, email mtee@wea.org.uk).

Domestic Architecture

Tutor: Warwick Burton. Looking at English domestic architecture from prehistoric, Roman, Anglo Saxon houses, through to present day, concentrating on vernacular, peasant and middle class dwellings rather than houses of the great.

WEA course to be held in Harrogate, Tuesdays 10am-noon from 24 September 2002 (enquiries: Margaret Smith, tel 01937 842588, email psstruc@tesco.net).

Traditional Buildings of the Lake District

Tutor: Andrew Lowe. Exploring the historical evolution of vernacular styles for houses, farms and industrial buildings, with the emphasis on understanding construction methods, and also seeking clues to help date buildings.

Lancaster University course, to be held in Grange over Sands, Wednesdays, 7pm-9pm from 25 September 2002 (enquiries: 01524 592624/592621).

The Industrial Architecture of Yorkshire

Tutor: Jane Hatcher. Looking at all kinds of industrial buildings, from small corn watermills to huge steam-powered factories, from turnpike toll bars, through canal warehouses to handsome railway stations. Social and economic changes as well as technological developments will be covered.

University of Leeds course to be held in Middlesbrough, Wednesdays 1.30-3.30pm from 25 September 2002 (enquiries: 01642 814987).



The Making of the English Landscape

Tutor: Steve Moorhouse. A broad survey of the evolution of the man-made landscape, from prehistoric times to the twentieth century, with an emphasis on features still visible on the ground. Topics will range from prehistoric settlements and field systems to the modern industrial city.

University of Leeds course to be held in Leeds, Thursdays 7pm-9pm from 3 October 2002 (enquiries: 0113 343 3222).

Everyday Buildings

Tutor: Mike Millward. The materials, design and purpose of traditional buildings, looking at local examples and buildings used by ordinary people rather than the church and gentry.

WEA course, to be held at Nelson & Colne College, Scotland Road, Nelson, Tuesdays 7pm-9pm from 8 October 2002 (enquiries: 01282 614154 / 616284 / 603553 or 844412).

Milling in North East Yorkshire

Tutor: John Harrison. North East Yorkshire has a rich heritage of surviving early corn mills. Local steadings will be considered in relationship to their villages and field systems, and surviving relic mills will be discussed with the view to understanding the various stages in their evolution.

WEA course to be held in Great Ayton, Thursdays 7.15-9.15 from 17 October 2002 (enquiries: Marian Button, tel 01642 723014).

YAS Heritage Committee

The Yorkshire Archaeological Society has invited any of its members in the YVBSG to sit on their Heritage Committee. The YVBSG Committee will discuss this at our next meeting.

The next meeting of the Heritage Committee, though, is on Tuesday 8 October at 3pm at Claremont, to which any YVBSG members are invited as observers. On the agenda are: Elmswell Old Hall, prospective revision of PPG15 and 16, and the Claremont Development Project. If you wish to go along to this meeting as an observer, please contact Mrs A M Rutherford, Convenor of the Heritage Committee, Claremont, 23 Clarendon Road, Leeds, LS2 9NZ, tel 0113 245 7910.

Or have a weekend away ...

If you're feeling more adventurous and would like to venture out of the county for a residential course, you might find the following of interest:

Alston Hall College

Alston Hall runs a programme of residential and day courses. Contact Alston Hall, Alston Lane, Longridge, Preston PR3 3BP, tel 01772 784661, or see website <http://www.alstonhall.u-net.com/>. Courses include:

History of Interior Design

Residential course, Friday 25 to Monday 28 October 2002. Tutor: Naomi Barrett. Fee £147. History of the interior from medieval times to the 20th century, covering aspects such as the introduction of furniture, wall coverings, the use of plaster and wood, and decorative qualities amongst others.

Great Country House Architects

Tutor: Roger Mitchell. Fee £18.50 per day (11am-4pm). Self-contained day courses looking at architects and history of the English country house to the end of the 18th century.

- Thursday 31 October 2002: Robert Smythson and the Elizabethan Country House
- Thursday 5 December 2002: Indigo Jones, Lord Burlington and the Palladian Country House
- Thursday 30 January 2003: Sir John Vanbrugh and the Baroque Country House
- Thursday 20 March 2003: Robert Adam and the Neo-Classical Country House

Burton Manor College

Burton Manor offers a range of courses and summer schools. Contact Burton Manor College, Burton, Neston, South Wirral, Cheshire CH64 5SJ, tel 0151 336 5172, website <http://www.burtonmanor.com/>. Courses include:

Drawing and Painting Buildings

Saturday 7 and Sunday 8 December 2002

Two-day course, 10am-5pm each day. Tutor: Jane Beech. Starts by looking at how to select a subject and create an interesting composition. How to draw a building in scale and the use of perspective will be covered. The tutor will help you to represent what you see in both pencil and in watercolour. There will also be demonstrations on how you can create textures to represent brickwork, roofs and other features. The course is suitable for anyone who is interested in representing buildings within their work, either as the main focal point or as an interesting feature in the background of a landscape.

Fee £68. You can book dinner, bed and breakfast in advance for £32.50 (ensuite £37.50) per night.

Ryedale rocks!

The Ryedale Vernacular Building Materials Research Group is a multi-disciplinary research group (with an even longer name than the YVBSG!) which has recently been set up to study the building materials of Ryedale and to identify the rock groups and their source quarries.

The group has a wide membership of interest including building historians, geologists, archaeologists, Local Authority Buildings Officers and English Heritage, and has already started to look at the building stones of towns and villages such as Malton, Burythorpe, Leavening, Acklam and Settrington.



The YVBSG has established links with the Ryedale group and it is hoped to arrange some joint meetings in the future, so if you'd like to learn how to distinguish Malton Oolite from Birdsall Calcareous Grit, watch this space!

In addition, the co-ordinator of the Ryedale group, Richard Myerscough, will lead a course on the topic next June:

The Geology of the Buildings of Ryedale

A new course to introduce students to the building stones of Ryedale. It is based on the research work being carried out by the Ryedale Vernacular Building Materials Research Group. Course participants will study the rocks and structures of Ryedale, identify the main building stones, and undertake visits to historical and vernacular buildings across Ryedale. To be held on four Tuesdays from 7pm to 9pm from 3 June 2003 at the Ryedale Indoor Bowls Club, Norton, plus two Saturday field trips. Details from University of Hull, tel 01482 465666.

Worth a visit

Kevin Illingworth adds another interesting location to his useful list of vernacular buildings open to the public (*Yorkshire Buildings* 2002). Brimham Lodge, Brimham Rocks Road, Burnt Yates, tel 01423 771770, offers bed and breakfast and also has a tea room which is open when the 'Open' sign is put out (most of the time!). Customers can sit outside and admire the building (dated 1661, YVBSG Report 414) if it's fine, or inside if it's not; the owners enjoy people looking at the house.

Reused stonework

I am a third year archaeology student at Durham and my dissertation subject involves the fabric of churches in England from c.500 to 1900. I am looking for things such as reused Roman or 'pagan' stonework, concealed clothing, hex and burn marks and walled-up north doors. I would be grateful for any information that YVBSG members can offer. I live at Lastingham Grange, Lastingham, York YO62 6TH.

Many thanks, Elissa Zacher

Other events you might like to try ...

Some of these events are publicised a long time in advance, so it's worth checking that they are still running before you go!

Be a House Detective

Saturday 28 September 2002

National Trust event for children at Nunnington Hall, 10am. Find out about Nunnington's history and discover what life was like in the past. Further details: 01439 748283. Cost £6 (booking essential).

Late Medieval Houses as an Expression of Social Status

Wednesday 2 October 2002

Talk by Anthony Emery to Sedbergh and District History Society, 7.30pm at Settlebeck High School, Sedbergh. Non-members £2. Contact Ann Sibley, tel 01539 625024.

North Yorkshire History Conference

Saturday 5 October 2002

Conference on 'Birth of a County', at the Golden Lion Hotel, Northallerton, 10am to 4pm. £12.50 including buffet lunch. Includes a talk by Barry Harrison on 'Aspects of Economic Growth in Northern Yorkshire 1600-1720'. Contact John Sheehan, tel 01609 771878.

Local History Bookfair

Saturday 26 October 2002

Annual bookfair at the Memorial Hall, Beverley, organised by East Riding of Yorkshire Council Library and Information Service, tel 01482 392755. The YVBSG hopes to have a stall at this event and the one below.

Archaeological & Historical Bookfair

Saturday 9 November 2002

Annual bookfair at the Archaeological Resource Centre, St Saviourgate, York, from 10am to 4pm. Free admission.

Buildings and Builders

Saturday 26 October 2002

The Society for Lincolnshire History and Archaeology's annual symposium at The Lawn, Lincoln. Speakers include Jenny Alexander, Pamela Marshall, Chris Brooke, David Stocker and Kate Giles. For further details contact the Society for Lincolnshire History and Archaeology, Jews' Court, 2-3 Steep Hill, Lincoln LN2 1LS, tel 01522 521337.



Lawkland Hall

Wednesday 20 November 2002

Talk by Giles Bowring (owner) to Austwick Field and Local History Society, 7.30pm at Austwick Parish Hall. Contact Mike Clarke on 01524 251213.

National Gutters Day

Friday 29 November 2002

To end the Society for the Protection of Ancient Buildings' 125th anniversary year, SPAB is hosting Britain's first PR campaign dedicated to the importance of building maintenance. On this day, the public are invited to join in National Gutters Day and clear every gutter in the country!

The Built Environment

Thursday 5 December 2002

Talk by George Sheeran. Part of a series of public lectures on *Hands on History: the records of the West Yorkshire Archive Service in Bradford*. To be held at the West Yorkshire Archive Service in Bradford, 15 Canal Road, Bradford 1, from 7.00-8.45 pm. A charge of £3 is payable on the door; places are limited. Tel 01274 233 210 for details.

Updating Pevsner

Wednesday 15 January 2003

Talk by Susan Wrathmell, Historic Buildings Consultant. A joint meeting of the Wakefield Historical Society and the Wakefield Civic Society in the Lecture Theatre in Block A at Bishopgarth, Westfield Road, Wakefield at 7.30pm. Details from the Wakefield Historical Society Secretary, Mrs C Nicoll, 18 South Drive, Sandal, Wakefield WF2 7ND.

The Care and Repair of Historical Buildings in Craven and the Dales

Thursday 6 February 2003

Talk by Mr J Innerdale to Skipton and Craven History Society at Old Folks Rest Centre, Assembly Rooms, Swadford Street, Skipton. Details from Mr A Wood, tel 01535 632651.

Architecture and History in a Craven Village

Thursday 20 February 2003

Talk by Arnold Pacey to Skipton and Craven History Society at Old Folks Rest Centre, Assembly Rooms, Swadford Street, Skipton. Details from Mr A Wood, tel 01535 632651.

Some recent publications

Hebden – The History of a Dales Township by David Joy on behalf of Hebden History Group. If you attended the YVBSG conference at Hebden in 1998, you may wish to read more about the history of the township. Includes four walks. £8.50 including p&p from Hebden History Group, Hole Bottom, Hebden, Skipton, North Yorkshire BD235DL (cheques payable to Hebden History Group). The YVBSG has received a complimentary copy of this book – if you'd like to borrow it, please contact Lorraine Moor.

Medieval Scarborough: Studies in Trade and Civic Life by Trevor Pearson (Scarborough Archaeological and Historical Society) and David Crouch (University of Hull), September 2001. The Boydell Press; ISBN 0902122967. £15.

Domestic Buildings Research Group June 2002 newsletter. The YVBSG has received a complimentary copy of this publication – if you'd like to borrow it, please contact David Crook. The contents include:

The Inspirational DBRG – Nye Place, Newdigate; Surrey Dendrochronology Project; Woking Place Tiled Roofs; Three Hampshire Houses; An Aisled Hall – Nunstead Court, Meopham, Kent; DBRG Herridge/Holman Transcripts Of Probate Inventories; Practical Measuring And Recording Of Historic Buildings; Detached Kitchens And List Of Suspected Detached Kitchens; Three Houses In Slovenia; Visit To Staplehurst, Salfords.

Chair: David Cook, 23 North End, Sedgfield, County Durham TS21 2AZ. Tel: 01740 620098, Email: dcook0@talk21.com

Secretary: David Crook, 18 Sycamore Terrace, Bootham, York YO30 7DN. Tel: 01904 652387, Email: Dave.Crook@suleacy.freeserve.co.uk

Membership Secretary: Jacky Quarmby, 16 Mount Pleasant, Guisborough TS14 6RA. Tel: 01287 636834, Email: jacky.quarmby@virgin.net

Journal/Newsheet Editor: Lorraine Moor, 102 Queen Victoria Street, South Bank, York YO23 1HN. Tel: 01904 632124, Email: lsm1@york.ac.uk