

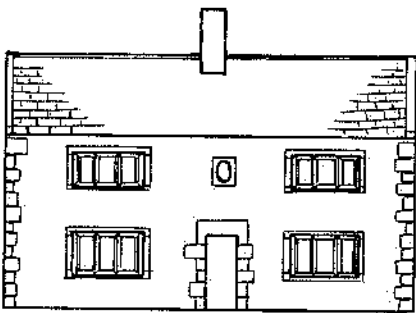
# YORKSHIRE VERNACULAR BUILDINGS STUDY GROUP



*Newsheet No 8*

*June 1995*

## Vernacular Architectural Features of Yorkshire



For some time I have been considering publishing an article, broadsheets, or even a book on many of the vernacular features that I have come across in Yorkshire.

It is some years since I gave a slide show to the YVBSG (then the North Yorkshire and Cleveland) on ovular windows. This followed the recording of a house that contained ovular windows with original frames, and the research I undertook thereafter to determine

the date of this feature and how many of them exist in Yorkshire. The more I saw and learnt the more enthusiastic I became. Many dated from the 1680s to the 1730s, and this was the main period within which they were inserted or purposely built in as features. Detailing on some of the windows is very rich.

Many members of the YVBSG knew of my enthusiasm for this subject and were on the lookout for ovular windows. I received many references and photographs, most of which I have followed up. I now have an extensive collection of slides depicting a wide variety of detailing, and the variable positions of these windows on and within houses. I have taken note of their presence in other

counties and their comparable dates. For size and quality of detailing, those I have observed around the Thornton area of Bradford take some beating.

I realised that by studying other features such as diamond-set chimneys, they too reveal interesting arrangements, locations, and dates. I have a mental library of many others.

I have suggested to the YVBSG that I would like to publish this information, as broadsheets or as a book, for use by our members and the lay public. This idea was also mooted at the Hutton-le-Hole Training Day earlier this year. I hope to progress such a publication at the next Committee Meeting.

*Malcolm Birdsall*

## Regional Furniture Society

The above society is holding a conference at Leyburn in April 1996 and would like to include a talk on fitted furniture in vernacular buildings in North Yorkshire. If any member is interested in giving such a talk, please contact Adam Bowett on 01677 423308.

## Swaledale recording day postponed

Owing to difficulties in obtaining responses to requests to measure buildings, the field day planned for 16 July 1995 has been postponed.

## Forthcoming events

### Annual conference 1995

30 June – 2 July 1995 at Horton-in-Ribblesdale. A few places are still available: contact 01642 814987. The Group's AGM will take place on Saturday 1 July 1995 at 5pm at the village hall in Horton-in-Ribblesdale.

### Honley walkabout

The Honley walkabout will be repeated on a Tuesday evening at the end of the summer, for the Halifax Antiquarian Vernacular Architecture Group. Anyone interested should contact David Cant (01422 883846) in August.

### Conference follow up day

24 September 1995 at Horton-in-Ribblesdale.

### Visit to YAS, Leeds

A visit to Claremont, the headquarters of the Yorkshire Archaeological Society, has been arranged for 3 February 1996. In the morning there will be a talk on the archives and library, and a discussion of the use of archive material. Lunch will be followed by a guided tour of the house.

### Annual Conference 1996

17 – 19 May 1996.

## World-wide advertising!

Browsing through the extensive amount of information on every subject imaginable which is available over the Internet (the vast network of computer networks stretching around the world), I spotted a mention the other day for our Annual Conference at Horton-in-Ribblesdale. This information is accessible from computer systems world-wide – good publicity for the YVBSG!

## Other events which may be of interest

### A walk around Ilkley

On Wednesday 16 August Malcolm Birdsall, under the auspices of the City of Bradford Metropolitan Council Arts, Museums and Libraries Division, will be leading a guided walk around Ilkley's 17th and 18th century buildings. The walk is circular and starts from the Manor House at 7.30pm; it is likely to last 1–1½ hours. Admission is free.

### Coastal villages

Over on the far east of our region, amongst the events run by the Flamborough Headland Heritage Coast Project (01262 606322) are a couple of walks, each lasting 2 hours:

'Building Bempton' on Wednesday 12 July – an evening of local history in the company of Steve Cook of East Yorkshire's Planning Department, as he runs an expert eye over the buildings of Bempton Village. Meet Bempton Village Pond at 6.30pm.

'Bricks and Mortar' on Wednesday 16 August – A gentle walk around the village of Flamborough with Steve Cook, discovering the little known features of the buildings which help to tell its history. Meet outside Flamborough Post Office at 6.30pm.

### Calderdale Town Walks

A programme of walks looking at areas of architectural, historical and social interest. Includes Heptonstall at 7pm on 21 June; Warley at 7pm on 5 July; Todmorden at 2pm on 30 July; Hipperholme and Lightcliffe at 7pm on 2 August; Northowram at 7pm on 16 August; Elland at 2pm on 24 September; and Halifax pubs at 2pm on 8 October. Details and leaflet from Hebden Bridge Tourist Office (01422 362369).

## Subscriptions still due ...

There are still a number of outstanding subscriptions for 1995. If you wish to remain a member of the Group, please make sure you have paid your £5 subscription.



## Input invited!

Suggestions and contributions from members are always welcome:

- If you know of any local events that might interest other members, please send details to the Newsheet Editor.
- Any suggestions for future events or locations for recording days should be sent to the Hon Secretary.
- Is anyone willing to organise a walk looking at vernacular buildings in a locality they know about? If so, please contact the Hon Secretary.

Editor: Lorraine Moor  
102 Queen Victoria Street  
South Bank  
York YO2 1HN  
Tel: 01904 632124