



YORKSHIRE VERNACULAR BUILDINGS STUDY GROUP

www.yvbsg.org.uk
www.facebook.com/yvbsg
twitter.com/YorksVernacular

Newsheet No 90

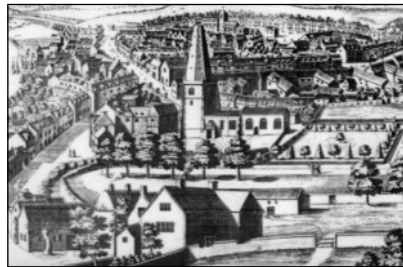
December 2017

YVBSG Events For Your Diary

Town & Country: Vernacular Buildings in the Yorkshire Landscape

Saturday 17 March 2018

Our next day school is wide-ranging and covers much of Yorkshire, dealing with longhouses, 'shadow' (chalk) houses, yeoman houses, town houses and the effect that Parliamentary enclosure had on moorland townships – the latter to be given by Sheila Graham who gave the memorable closing talk at the last day school. In addition to the usual suspects – Barry Harrison and myself – we welcome back David Cant who will share with us his recent documentary research on the rebuilding of a seventeenth century house near Halifax. We are fortunate to welcome Dr Kate Giles (of the University of York) to speak about Malton houses based on a research project on probate documents that illuminate the form of buildings in this market town, using the description of buildings and goods listed in inventories which enable a reconstruction of lost houses, shops and workshops. We also welcome George Sheeran (formerly of Bradford University) who will tell us about his recent research on the chalkstone buildings that survive, and do not survive other than as intriguing remnants, on the landscape of the Wolds and the east coast. Please support this event by attending, and please book early! The venue is the Headingley campus of Leeds Beckett University. Booking form enclosed with this Newsheet and also available on the website. The Group's AGM will follow the day school.



'Malton in the County of York'

Annual Recording Conference in Rotherham

Friday 11 to Sunday 13 May 2018

The next annual recording conference will be held in Rotherham, as part of the Group's wider programme focusing on the buildings of South Yorkshire over four years. Full details and booking form to follow in the February Newsheet.

New membership secretary

In recent years, the roles of Treasurer and Membership Secretary have been carried out by the same person. As from January 2018, the two roles will be split. Sue Southwell is happy to continue as Treasurer, whilst Pat Leggett has volunteered to take on the role of Membership Secretary in an acting capacity until the new arrangement is ratified by the AGM in March.

Membership renewal

Membership fees for the coming calendar year become due on 1 January 2018. We hope you will agree that the fee of £10 offers good value for money and that you will keep up your membership by returning the enclosed form to Pat Leggett at your earliest convenience.

Next committee meeting

The next meeting of the YVBSG committee will be held on Saturday 10 February 2018. If you'd like to raise any matters, or suggest (or even offer to organise!) future events please contact the Secretary, Mary Cook.

*Wishing a Very Happy New
Year to all our members
- and happy recording!*



Reports available online via Members' Area

We continue to make building reports available to members via a link in the Members' Area of the website. This takes you to the 'Box' account where the reports are stored in pdf format; approximately 240 reports are currently available.

The password to the Members' Area will change in January and you'll receive the new details when you renew your membership for 2018 (or for a reminder send an email at any time to webmaster@yvbsg.org.uk).

South Yorkshire Vernacular & Barnsley's Best Buildings

After initial concern over low numbers, the day school held on 21 October 2017 turned out to be a resounding success with over 70 people present. Thank you to those who responded to the call for bookings, to David Cook and Peter Thornborrow for organising an enjoyable event, and to the speakers for introducing the audience to some fascinating buildings.

Next Newsheet

The next edition will be in February 2018 – please send any contributions (for example short articles, details of publications or events of interest) to the editor by 31 January 2018.

Report on recent events

Northallerton Walkabout ... or Sir Isaac Newton lives!

A recent letter to the local paper rather unkindly described Northallerton as 'the most uninteresting and featureless county town in the whole country'.

However, for the small band of YVBSG members and guests, our walkabout on 10 September 2017, led by Tony Robinson and Barry Harrison, proved otherwise and found much of interest, not least the occasional sightings of 'Sir Isaac Newton' leading an alternative historic tour, it being Heritage Open Weekend.

We began at the parish church, with a brief look at the North End, an area of mostly eighteenth and nineteenth century brick cottages, some rebuilt on



the lower courses of older stone buildings. North End was the industrial end of town, with tanneries, stone and timber yards and a steam mill. However, near to the church cluster some more superior buildings, including Porch House (recorded by the Group in 2010) along with some Georgian buildings. The High Street was much rebuilt from the early eighteenth century, and is characterised along its northern half by Georgian buildings.

In spite of twentieth century redevelopment on the backlands off the High Street, much evidence remains of older vernacular brick and cobble building, with some former yards now converted into retail arcades and others having gone from residential use to storage and workshop use, reverting to residential use in the late twentieth century.

There is little sign of visible timber framing, apart from the Fleece Inn behind the Town Hall, and the recently (2014) reconstructed gable end cruck at the south end of the High Street. However, little recording has been



undertaken in Northallerton, and there may well be hidden timber framing to be discovered.

The walk revealed the possible presence of some rear staircase turrets behind the High Street and some surviving possible seventeenth century buildings still fronting the south end of High Street.

The recent press comments are clearly ill advised, as the town is full of interest from an architectural point of view, and the walkabout participants made many perceptive and thought-provoking comments giving new insights into a town I thought I knew.

Tony Robinson

An interesting volunteer opportunity

Kirklees Museums & Galleries have recently discovered that they have a large collection of photographs taken in the early 1900s of West Yorkshire vernacular buildings. They are hoping to digitise the collection and wondered whether any YVBSG members would be interested in helping to scan and log the photographs on a voluntary basis at their collections store in Huddersfield. The work will be undertaken on Wednesday mornings for three months initially. The aim is to make the images accessible to the public when the project is complete. If you are interested, or would like more details, please contact Becky Bracey, Volunteer Support Officer, rebecca.bracey@kirklees.gov.uk, telephone 01484 221000.

Publications

The Disappearing Mills and Bread Ovens of Weardale by Christine Ruskin. £12.99. Available at visitor centres in Weardale, from Amazon, or from the author, email chrisruskinwaterhouse@hotmail.co.uk. Further information about buildings in this area can be found on 'The Disappearing Farms of Weardale' Facebook page.

Every Barn Tells a Story. A pack of six colourful walk booklets set in the barns and walls landscape of Upper Swaledale. The walks range between four and five miles long. The *Every Barn Tells a Story* community project was created by the Yorkshire Dales National Park Authority to celebrate the stories and history of traditional farm buildings in Muker parish. £4.99 from local retailers or from the YDNPA's online shop, www.yorkshiredales.org.uk.

Yorkshire Dales life and tradition

Marking the fiftieth anniversary in 2018 of Marie Hartley and Joan Ingilby's classic work, *Life and Tradition in the Yorkshire Dales*, a new edition of the book is to be published, along with matching events and activities across the Dales from Easter onwards. Keep an eye open for further publicity in the new year.

Buildings at risk

Historic England recently published their *Heritage at Risk 2017* registers (including one for Yorkshire), which can be downloaded in pdf format from <https://historicengland.org.uk/images-books/publications/har-2017-registers>. The good news is that this year's list contains twenty-one sites fewer than the 2016 list, and some important buildings such as the barn at Watton Abbey in the East Riding are becoming usable again.

Whilst on the topic of rescued buildings, Kevin Illingworth provides an optimistic update on Great Lear Ings, Heptonstall, near Hebden Bridge. This former farmhouse, dated 1648 on the front porch and 1604 on the rear wing (photo below), has now been sold, after being unoccupied and 'at risk' for about half a century. A large YVBSG group visited the farm in June 2007 followed by more members in August 2014. See *Yorkshire Buildings* No 43, 2015.



Datestones: dated to the day

Earlier this year up to five committee members made several visits to the Barnsley area, looking for buildings to survey for the Annual Recording Conference in May. At Bullhouse Hall, Millhouse Green, nine miles west of Barnsley, there were at least seven datestones on the hall, chapel and farm buildings. Most of these have incised 'frames' or 'tressures' around the dates, and with decorated corners. Two of these were 'dated to the day'. We wanted to know if there were any more of these. So far, I have collected (with camera) around thirty datestones dated to one day, and most of these can be seen from a public footpath. There are seven in Yorkshire (including Earby), six in Lancashire (including Furness), three in Westmorland, plus odd ones in Cheshire, Shropshire, Nottinghamshire and south-east counties. Eight are pictured below: are there more to be found?

Kevin Illingworth (j.k.illingworth@btinternet.com)



Above: Barn east of Bullhouse Hall at Millhouse Green, Penistone near Barnsley. Incised:

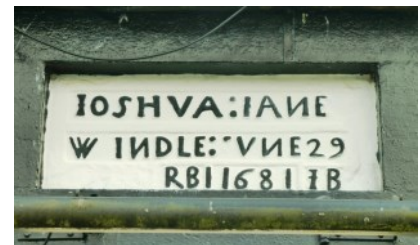
JUN ye 10 1695



Above: Lower East Lee Farmhouse, East Lee Lane, Todmorden, Calderdale. Raised lettering:

ES. 27. OCTO. 1631

above deeply cut and moulded ogee lintel of two-storey porch. Visited by Peter Thornborrow's 'Pay As You Go Walk And Talk' group in September 1999.



Above: White Lion public house, Green End Road, Earby, former West Riding. Dated panel under eaves, high above doorway, reads, with raised lettering:

JOSHVA : JANE : WINDLE :
JVNE 29 : RB : 1681 : IB

A number of YVBSG members visited this pub during an Earby walkabout on 25 April 1998, with Sue Wrathmell and the Earby & District Local History Society.



Above: Guy's Farm, Ellel, Lancashire (six miles south of Lancaster). Re-set doorhead above shippon doorway has raised lettering:

JVNE THE : 1 1633
NICHOLAS HOLDEN

Guy's Farm is a Girlguiding activity centre.



Left: Bullhouse Chapel at Millhouse Green, Penistone near Barnsley. Formerly Presbyterian. Incised:

APRIL 18 ANOD 1692 :

on keystone (with 'II' inscribed beneath). Built by Elkanah Rich.



Above: New House Farmhouse, Thursden, Briercliffe, Lancashire (on Red Spa Moor, five miles east of Burnley, and nine miles north-west of Hebden Bridge). Triangular-headed lintel with raised lettering reads:

ROBERT : PARKER AND : JANE : HIS : WIFE : ROBERT
& HENRY : THEIR : SONNS : BVILT : THIS : HOVS :
MAY : 2 : 1672

Datestone above reads:

: O THOV : OF : MIGHTY : MOST BLESSE : THEM :
THAT : MADE : THE : COST : RP 1672

This doorway is all that survives of New House Farmhouse, alone on the moors at 330 metres (1082 feet) above sea-level, abandoned in 1886 and demolished c1918.



Above: Newton Hall Cottage, High Newton, Furness (four miles north of Grange-over-Sands). Long narrow slate with incised inscription:

ROGER : BARROW : HOVS : AP : 24 : 1673

Seen during High Newton walkabout by Cumbria Vernacular Buildings Group, 13 July 2017.



Above: Dean School house, Rob Lane, Newton-le-Willows, Lancashire. Door lintel reads:

JOHN : STIRRVP : BVILT : THIS : SCOOLE : HOVSE :
VPON : HIS : OWN : COST : AND : CHARGES : AND :
GAVE : THE : VSE : OF : FIFTY : POVND : FOR : EVER :
JVNE : THE : 6 : 1677

Other events of possible interest ...

Some of these events are publicised a long time in advance, so you may wish to check details before you go!

Calderdale Heritage Walks

Various dates

The winter programme of fortnightly walks is now available online at www.calderdaleheritagewalks.org.uk. It includes *Georgian Halifax* led by Anne Kirker on Monday 1 January 2018 at 2pm (from West Gate on the top side of the Piece Hall) and *The changing face of Sowerby Bridge* led by David Cant on Sunday 28 January 2018 at 2pm (from Moorings pub on the old wharf). Both last for about 2 hours and cost £3 per person, no need to book.

The Kiplin Hall Estate

Wednesday 17 January 2018

Talk by Emma Wells to Yorkshire Architectural and York Archaeological Society. 7.30pm, Friends Meeting House, Friargate, York. www.yayas.org.uk

Great Houses of South Yorkshire

Thursday 18 January 2018

Talk by Pat McLaughlin to Doncaster Civic Trust, 7.30pm at St Peter's RC Church Hall, Chequer Road, Doncaster. See www.doncastercivictrust.org.uk

Hopwood Hall

Thursday 25 January 2018

Talk by Geoff Wellens and Hopwood DePree to Middleton Archaeological Society on Hopwood Hall, a brick and stone manor house built around a timber-framed hall. 7.30pm at The Olde Boar's Head, Middleton, near Manchester. <http://middletonas.com>.

If Walls Could Talk

Friday 26 January 2018

Suitable for beginners, this workshop will help you to find out more about the history of your home and the people who lived there. 2pm to 4pm at West Yorkshire History Centre in Wakefield, £12. Book at www.wyjs.org.uk/archive-services/events/if-walls-could-talk/.

Heraldry in 17th century West Yorkshire houses – as a sign of status

Monday 29 January 2018

Talk by Peter Thornborrow to Huddersfield Local History Society, 7.30pm in Bronte Lecture Theatre, University of Huddersfield, £2. See www.huddersfieldhistory.org.uk

Traditional Buildings of North East Lancashire

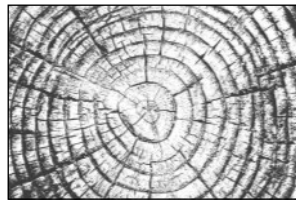
Thursday 1 February 2018

Talk by Kevin Illingworth to Hyndburn Local History Society at Accrington Library Lecture Hall, St James Street, Accrington BB5 1NQ at 7.30pm. Visitors £3. Contact 01254 237229 or 235880. www.hyndburnlhs.org.uk

Dendrochronology of Local Buildings

Thursday 1 February 2018

Talk by Alison Armstrong to Upper Wharfedale Heritage Group, exploring how tree-ring dating can be used to unlock the secrets of buildings. 7.30pm in the Soroptomist Rooms, 28 Otley Street, Skipton. £3. www.uwhg.org.uk



Out of Nidderdale and Over the Hill: a Valley Lost in Time

Saturday 3 February 2018

Talk by Jennifer Deadman to Harrogate Archaeology Society on the landscape of a valley which since prehistory has been home to many but now supports just a few farmsteads. 2.30pm at Harlow Hill Methodist Church, Otley Road, Harrogate. £3. harrogatearchsoc.co.uk

Woodland Crafts and Industries

Monday 12 February 2018

Talk by Andrew Lowe (former Buildings Conservation Officer for the Lake District National Park Authority) to Kirkby Lonsdale Civic Society. 7.30pm in Lunesdale Hall, New Road, Kirkby Lonsdale. £2.50. Further details at www.kirkbylonsdalecivicsociety.org.

Damn Your Eyes!

Wednesday 14 February 2018

Talk by John Billingsley to Hebden Bridge Local History Society, 7.30pm at the Methodist Church, Market Street, Hebden Bridge. John explores material remains of folk magic in our built environment, comprising carvings and customs aimed at protecting buildings. See www.hebdenbridgehistory.org.uk

Historic Building Restoration

Wednesday 21 February 2018

Talk by Charles Anelay to Yorkshire Architectural and York Archaeological Society. 7.30pm, Friends Meeting House, Friargate, York. www.yayas.org.uk

Studies in Vernacular Architecture

Saturday 24 February 2018

Lancashire Local History Federation day school at Pendle Heritage Centre, Barrowford. Talks are *Pendle Heritage Centre at 40* by John Miller; *Excavating Engels: recent archaeological evidence for 19th century industrial housing in Manchester and Salford* by Mike Nevell; *From the Mersey to the Duddon: recent discoveries in Lancashire since 2014* by Kevin Illingworth; and *Record it before it moves! 25 years of recording buildings in advance of conversion* by Nigel Neil. Fee £18 with lunch, £12 without. Booking form available to download at www.lancashirehistory.org/event-diary.html

Farm Buildings of the Heart of Teesdale

Wednesday 28 February 2018

Talk by Jennifer Deadman to Upper Dales Family History Group on farmsteads which she recorded with a volunteer historic buildings survey group, training them not only to record the fabric of the buildings but also to place them in their landscape setting and their local historic context. 2pm in Harmby Village Hall, Harmby, Leyburn. www.upperdalesfhg.org.uk, £2.

Discovering a Landscape of Industry

Wednesday 7 March 2018

Talk by Andrew Lowe to Sedbergh History Society, looking at the working landscape of the Lake District. 7.30pm in Settlebeck School, Sedbergh. £2. www.sedberghhistory.org

Investigating Tree Archaeology

Wednesday 16 and Thursday 17 May 2018

Conference to be held at Sheffield Hallam University, bringing together dendrochronologists, tree specialists, vernacular architecture specialists and woodland historians. Full details at www.ukeconet.org/tree_archaeology.html

Chair: Peter Thornborrow, The West Wing, Birthwaite Hall, Huddersfield Road, Darton, Barnsley S75 5JS, chairman@yvbsg.org.uk

Secretary: Mary Cook, 12 Annand Way, Newton Aycliffe DL5 4ZD, 01325 310114, secretary@yvbsg.org.uk

Enquiries Secretary: Barry Harrison, 17 Whitby Avenue, Guisborough TS14 7AP, enquiries@yvbsg.org.uk

Membership Secretary: Pat Leggett, 11 Lonsdale Meadows, Boston Spa, W Yorks, LS23 6DQ, membership-secretary@yvbsg.org.uk

Treasurer: Sue Southwell, 2 Water End, Brompton, Northallerton DL6 2RL, 01609 776863, treasurer@yvbsg.org.uk

Archivist: David Cook, 12 Annand Way, Newton Aycliffe DL5 4ZD, 01325 310114, archivist@yvbsg.org.uk

Yorkshire Buildings Editorial Team: Tony Berry, Tony Robinson, Beth Shurter, editor@yvbsg.org.uk

Newsheet and Web: Lorraine Moor, 102 Queen Victoria Street, South Bank, York YO23 1HN, newsheet@yvbsg.org.uk