

YORKSHIRE VERNACULAR BUILDINGS STUDY GROUP



Newsheet No 24

August 2000

YVBSG events for your diary

Visit to Farnley Hall

Saturday 9 September 2000

Unfortunately we are unable to confirm this event at the time of going to press. If you have contacted David Crook, he will get back to you with details if the event goes ahead.

Conference Review Day in Haworth

Sunday 24 September 2000

Meet in the Church Hall, Church Street, Haworth (opposite the Parsonage garden, near the church) at 2pm. Finish around 4.30pm. Cost: £2 to cover room hire and refreshments. Please let Malcolm Birdsall know if you are coming (tel 01943 830460).

It is suggested that those who wish to have lunch first should meet at the Old White Lion at 12.30pm.

Team leaders should send completed reports from the May conference to Don McLellan by 1 September to allow time for copying and distribution.

Walk in Bishopdale

Sunday 15 October 2000

A walk of approximately 5 miles led by Arnold Pacey, including the village of Thorlby and outlying farms. Meet at the Street Head Inn, Bishopdale, at 1.40pm. The Inn is on the B6160 at grid reference SD 998 859. Buses to Bishopdale run from Leeds, Bradford, Wakefield and Ilkley. Lunch can be taken at the Street Head Inn. Contact Arnold Pacey, 8 North Street, Addingham, Ilkley, LS29 0QY if you intend to come.

Special Note:

Please let Arnold know if you intend to take lunch at the Street Head Inn, and if you would require a vegetarian meal, or have any other preferences. Arnold can also advise on bus times, if you request this.



Committee Meeting

Sunday 12 November 2000

If you have any item to bring to the Committee's attention, please contact David Crook by the end of October. Committee Members will receive details and agenda in due course.

Day School on Town Houses and Buildings

Saturday 17 March 2001

The annual day school, to be held in York. Details to follow in the next Newsheet.



Annual Recording Conference

Friday 18 to Sunday 20 May 2001

To be held in Flamborough, East Yorkshire. Details to follow.

South Yorkshire Recording Day

This event has been replaced by the Bishopdale walk - see details above. We plan to re-schedule a day's recording in South Yorkshire in the calendar of events for 2001.

Next Newsheet

Thank you for all contributions to the newsheet - do please continue to send them. Any items for the December newsheet should reach me by the end of November 2000.

Could I also encourage all members to start thinking about possible articles for next year's *Yorkshire Buildings*? It would be good to keep up the enthusiasm demonstrated in recent editions! Deadline is 31 December 2000.

Thank you!

Thanks go to Liz Reynolds for organising a very enjoyable day in Burton in Lonsdale in July, and to Kit Dodson for allowing us to roam freely around his fascinating house.

Ritual marks, old shoes and dried cats

Brian Hoggard, a PhD student at University College, Worcester, is appealing for information on a range of objects that are sometimes discovered hidden within the walls and under the floors of old buildings. These include dried or mummified cats, old shoes, horse skulls, witch bottles, written curses and charms, and ritual marks, which were apparently concealed in the building to protect the owners from some as yet unknown danger.

If you are interested or are able to help, contact Brian Hoggard, PO Box 92, Worcester WR5 3XR, or see his web site at <http://www.folkmagic.co.uk/>.



History in Hull

The Hull Local History Unit is a local history/local studies research and publishing unit and resource centre. The Unit is open for visits by individuals from 9am-5pm Mondays to Thursdays, 9am-4pm on Fridays. Collections include photocopies of photographs of local buildings demolished by demolition contractors in the 1940s to 1980s.

Further information from the Local History Unit, Park Street Centre, Hull College, Park Street, Hull HU2 8RR, telephone 01482 598952, email historyunit@netscape.net.

Yorkshire Medieval Names

If you carry out documentary research, you may be interested in this new service.

The Yorkshire Medieval Names data bank contains more than half a million entries relating to individuals living in and associated with Yorkshire, mostly before 1550. Sources include local and national government records, court and ecclesiastical records, legal records, taxation returns, details of memberships of religious guilds and lists of freemen, civic officials and various accounts, parish registers and muster records, as well as charters, wills, inventories and monumental inscriptions.

A search can be made for a name, a place or an occupation, and a search fee of £10 for each of these is payable in advance. The information will be sent directly to applicants as a list with detailed referencing.

The search service is available from either the Family Database Service, Claremont, 23 Clarendon Road, Leeds LS2 9NZ (cheque made payable to YAS) or from Yorkshire Family History, York Archaeological Trust, Cromwell House, 13 Ogleforth, York YO1 7JG (cheque payable to York Archaeological Trust).

York Archaeological Trust also offers to search local printed sources for the period 1600-1840, for a fee of £15 per hour.

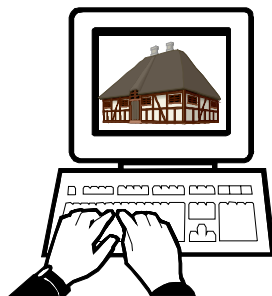
Humber Archaeology

The Humber Archaeology Partnership (which comprises two separate sections, the Humber Sites and Monuments Record and Humber Field Archaeology – a contracting organisation) now publishes a twice-yearly newsletter on archaeology in the Hull and East Riding region. To join the free mailing list, contact the Humber Archaeology Partnership, The Old School, Northumberland Avenue, Hull HU2 0LN (tel 01482 217466), web site <http://www.hullcc.gov.uk/archaeology>.

The Humber SMR contains a range of sources, including aerial photographs, slides, articles, references, historic maps and archaeological fieldwork results. The computer database makes it possible to search for all known sites of a particular type: for example all nineteenth century farmhouses. Further information from the above address.

Buildings on the Web

Out-of print archaeology books have become available again in a new digitised library set up by the Archaeology Data Service based in the department of Archaeology at the University of York. The virtual library, free to users, will make old volumes and new data more accessible for research. The library is founded on early research reports and monographs from the CBA, which include *The Recording of Architecture and its Publication* (1955) and *Notes on the Investigation of Smaller Domestic Buildings* (1955). To visit the ADS library point your web browser at <http://ads.ahds.ac.uk/> and click on *Catalogue* then *Library*.



Also accessible at the ADS site (click on *Catalogue* then *Special Collections*) is the Vernacular Architecture Group Dendrochronology Database, consisting of tree-ring dates for over 800 vernacular buildings in the UK. The database holds period, location and reference information for each record. The lists have previously appeared in *Vernacular Architecture*, the journal of the VAG.

Other interesting web sites can be found at <http://wonderful.org.uk> (about timber-framed buildings) and <http://www.old-maps.co.uk/> (where free copies of the first edition OS maps can be viewed and printed out).

In need of friends

The Ryedale Folk Museum, home to several vernacular buildings, is looking for 'Friends'. Annual subscription is £10 (single) or £20 (family, £17.50 if you live in Ryedale). As a Friend you receive a newsletter and can visit the museum as often as you like; you can also visit Malton Museum and Beck Isle Museum, Pickering, at half price. Contact Ryedale Folk Museum, Hutton le Hole, York YO62 6UA (tel 01751 417367).

Other events of possible interest

Heritage Open Days

Saturday 16 - Sunday 17 September 2000

This annual event gets better and better, with almost 2000 buildings open free of charge, many of which are not normally open to the public. Details from The Civic Trust, 17 Carlton House Terrace, London SW1Y 5AW, tel 020 7930 0914, or see the online directory of events at <http://www.civictrust.org.uk/>. Tourist Information Centres usually have details too.

Local and Family History Day

Saturday 30 September 2000

To be held at Leeds Town Hall, 10.30am-4pm. Organised by the West Yorkshire Archive Service, enquiries to Linda Birch, tel 0113 289 8248, or see web site <http://www.archives.wyjs.org.uk/>.

Moorland Pasts II

Sunday 1 October 2000

An archaeology days school at the North York Moors Sutton Bank Visitor Centre to review the archaeology of the North York Moors. Details from Steve Sherlock, c/o Meander, PO Box 207, Stockton on Tees TS18 5YW, tel 01904 430680.

York Archaeological/Historical Bookfair

Saturday 14 October 2000

Organised by York Archaeological Trust, to be held at The Archaeological Resource Centre (ARC), St Saviourgate, York, 10am - 4pm. A large selection of new and second-hand books available from visiting specialist booksellers as well as local archaeological and historical societies. Free admission.

Talk on Marsh Hall, Northowram

Tuesday 17 October 2000

A talk to the Halifax Antiquarian Society at 7.30pm in Halifax Library.

Looking after the workers: industrial housing in North East Derbyshire

Saturday 21 October 2000

East Midlands Industrial Archaeology Conference, organised by Derbyshire Archaeological Society at Alfreton Hall, Derbyshire, looking at the development of settlement patterns resulting from mid-19th century coal and iron-working, including a visit to surviving examples of industrial housing. Details from Mark Sissons, 1 Far Coton, Market Bosworth, Nuneaton CV13 0PJ.

VAG Winter Conference

16-17 December 2000 in London.

Publications

The Dated Buildings of Bentham by Emmeline Garnett and Margaret Green-Hughes, published by North Craven Heritage Trust, 64pp. ISBN 0 9510071 14. In stock at Bentham Tourist Information Centre, Main Street, Bentham, tel 015242 62529, £4.25 + postage.

The Dated Buildings of South Lonsdale by Emmeline Garnett has just been reprinted, and covers datestones right up to the Yorkshire border. Price £17. Available from Hudson History, Procter House, Kirkgate, Settle, North Yorkshire BD24 9DZ, tel 01729 825773.

Thatch in & around Ryedale by E Blizzard, N Sykes, W Tegetmeir and M Watts. 48pp, published 2000 by Ryedale Folk Museum and Hutton Press, price £4.95. ISBN 1 902709 06 3. Describes the history of thatching in the area and includes a gazetteer of thatched buildings in Ryedale and the North York Moors.

A Time to Reap: a celebration of East Yorkshire's agricultural history by Stephen Harrison. Commissioned by the Driffield Agricultural Society, published spring 2000. ISBN 0-9538258-0-9, price £5.99. Includes references to farm buildings, notably those of the Sledmere estate.

Buildings of Stokesley: A Small Georgian Market Town. Published 2000 by the Stokesley Society. 63pp, hardback, £16.99 from Hugh Charman, Stokesley Society, 9 The Avenue, Stokesley, North Yorkshire TS9 5ET. An extended illustrated 'town trail', with line drawings by YVBSG member Tony Robinson.

Lincolnshire Buildings in the Mud and Stud Tradition by Rodney Cousins. May 2000, 64pp, paperback, £12.95 + £2 p&p from Heritage Lincolnshire, The Old School, Cameron Street, Heckington, Sleaford, Lincolnshire NG34 9RW, tel 01529 461499 (cheques payable to Heritage Lincolnshire). Includes gazetteer and description of method of construction.

Vernacular Buildings of Whitchurch and Area and their Occupants by Madge Moran. Published 1999 by Logaston Press, Little Logaston, Logaston, Wootton, Almeley, Herefordshire HR3 6QH, tel 01544 327344. 284pp, paperback, £12.95. Anyone interested in timber framing will enjoy the detailed descriptions of these Shropshire buildings.



The Millennium Book of Topcliffe by John M Graham. Published 2000 by J M Graham, Poppleton House, Front Street, Topcliffe, Thirsk YO7 3NZ. Disappointing cover of buildings.

Bridlington, An Introduction to its History and Buildings by David and Susan Neave. Published by Smith Settle Ltd, tel 01943 467958. Paperback £7.95, hardback £12.95. ISBN 1 85825 137 0.

Courses for autumn

The Making of the Pennine Landscape

Tutor: Alan Petford. Thursdays 7-9pm from 21 September 2000, to be held in Halifax, organised by University of Leeds/WEA (tel 0113 233 3222). Sets out to explore the evolution of the landscape using evidence of place names, field patterns, domestic and ecclesiastical buildings as well as written records.

Tudor Architecture

Tutor: Jane Hatcher. Wednesdays 10-12am from 27 September 2000, at Middlesbrough Adult Education Centre (tel 01642 814987), organised by University of Leeds. Looking at northern examples of Tudor great houses, including the Great Hall, Great Chamber, and Long Gallery. A 'level 2' course - appropriate credits at 'level 1' normally required.

Chair: David Cook, 23 North End, Sedgfield, County Durham TS21 2AZ. Tel: 01740 620098, Email: dcook0@talk21.com

Secretary: David Crook, 18 Sycamore Terrace, Bootham, York YO30 7DN. Tel: 01904 652387, Email: Dave.Crook@suleacy.freeserve.co.uk

Membership Secretary: Jacky Quarmby, 16 Mount Pleasant, Guisborough TS14 6RA. Tel: 01287 636834, Email: jacky.quarmby@virgin.net

Journal/Newsheet Editor: Lorraine Moor, 102 Queen Victoria Street, South Bank, York YO23 1HN. Tel: 01904 632124, Email: lsm1@york.ac.uk